

## BENEFITS OF VICTIM IMPACT PANELS

MADD believes that VIPs can:

- Allow the offender to consider the pain and suffering that impaired driving can cause other people.
- Help offenders move beyond “stuck” in focusing on their own bad luck.
- Serve as a first step in breaking the denial of offenders.
- Imprint images of real people in offenders’ minds that will replay when drinking and driving is considered at another time.
- Change behavior and reduce impaired driving recidivism.

## QUOTES ABOUT VICTIM IMPACT PANELS

*“Very valuable because it’s importance to hear from people who have experienced tragedy first hand.”*

*“It made me realize more about how families and lives are ruined from drunk driving.”*

*“It showed the wide impact from drinking & driving, something you don’t necessarily think of until you hear it from someone who personally experienced it.”*

**MADD Nebraska State Office**  
145 North 46th Street  
Lincoln, NE 68503  
402-434-5330  
1-800-444-6233  
[www.maddnebraska.org](http://www.maddnebraska.org)

## MADD Nebraska Victim Impact Panels

*Our mission is to stop drunk driving, support the victims of this violent crime, and prevent underage drinking.*



**MADD**  
Activism | Victim Services | Education

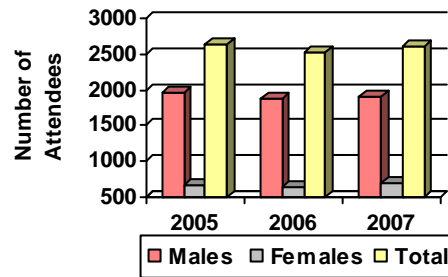
## WHAT ARE VICTIM IMPACT PANELS?

A Victim Impact Panel (VIP) is a group of two or three individuals who speak about an impaired driving crash in which they were injured or in which a loved one was killed or injured, and how the crash has impacted their lives. They do not judge or blame those who listen. The audience is often made up of offenders who have been convicted of MIP or DUI and their guests.

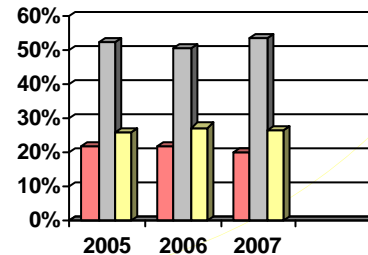
The purpose of a VIP is to individualize and humanize the consequences of impaired driving, to change attitudes and behaviors, and to deter impaired driving recidivism. Panels also give victims a healing opportunity to share their stories in a meaningful way.

## WHO WE SERVE

Presented below is a comparison of attendance at VIPs by gender and age from 2005-2007.



Year	Males	Females	Total
2005	1970 (74.7%)	668 (25.3%)	2638
2006	1885 (75%)	632 (25%)	2517
2007	1905 (73.1%)	700 (26.9%)	2605



Year	15-20 yrs	21-35 yrs	36+ yrs	Total
2005	562 (21.8%)	1349 (52.2%)	672 (26%)	2583
2006	562 (22%)	1294 (50.6%)	701 (27.4%)	2557
2007	506 (20.2%)	1334 (53.3%)	663 (26.5%)	2503

## COUNTIES SERVED

VIPs are currently held in Adams, Buffalo, Dodge, Douglas, Gage, Lancaster, Madison, Seward, and Scottsbluff counties. In 2007, the top ten counties with the highest VIP attendance were:

1. Lancaster (n=817)
2. Douglas (n=261)
3. Buffalo (n=224)
4. Sarpy (n=209)
5. Dodge (n=131)
6. Hall (n=99)
7. Gage (n=78)
8. Phelps (n=75)
9. Adams (n=62)
10. Madison (n=62)

If you would like to know when a VIP will be in your area, please visit the MADD Nebraska website at [www.madd.nebraska.org](http://www.madd.nebraska.org). If you are interested in becoming a speaker or volunteering at a VIP, please call 402-434-5330 or 1-800-444-6233. If you are a victim of drunk driving, please contact our State Victim Advocate, Cyndee McCarthy at 402-434-5330 or [cyndee.mccarthy@madd.org](mailto:cyndee.mccarthy@madd.org).